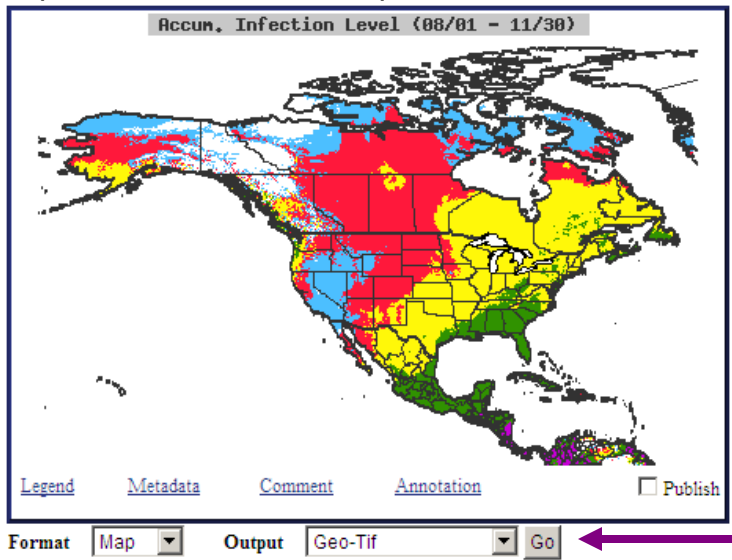


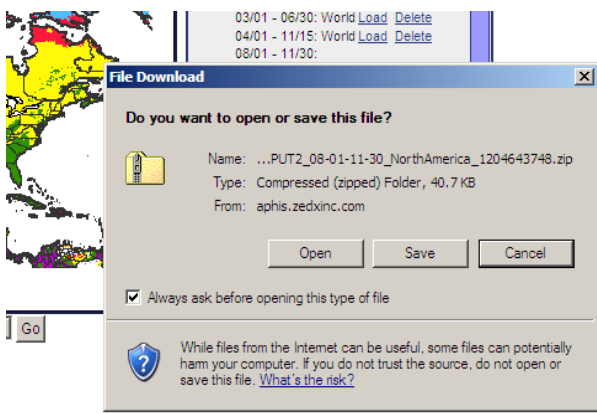
Using NAPPFAST maps as layers in ARCMAP

Export the NAPPFAST map:

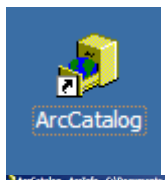


Nectria galli
 << Back
 - Average Histo
 - Accum. In
 01/01 - 01/01
 03/01 - 03/01
 04/01 - 04/01
 08/01 - 08/01
 N.Ameri
 08/01 - 08/01
 08/17 - 08/17
 N.Ameri
 08/17 - 08/17
 N.Ameri
 09/01 - 09/01
 09/15 - 09/15
 N.Ameri
 09/20 - 09/20
 N.Ameri
 10/17 - 10/17

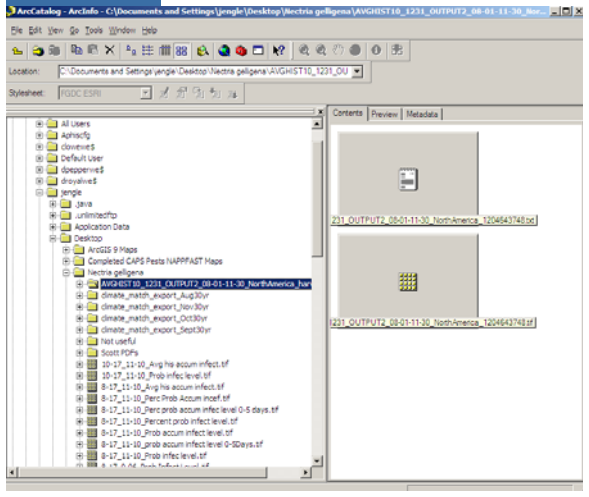
Have the map you wish to export loaded. In output, have Geo-Tif selected, and then press the 'Go' button. Save the compressed folder, then extract the folder.

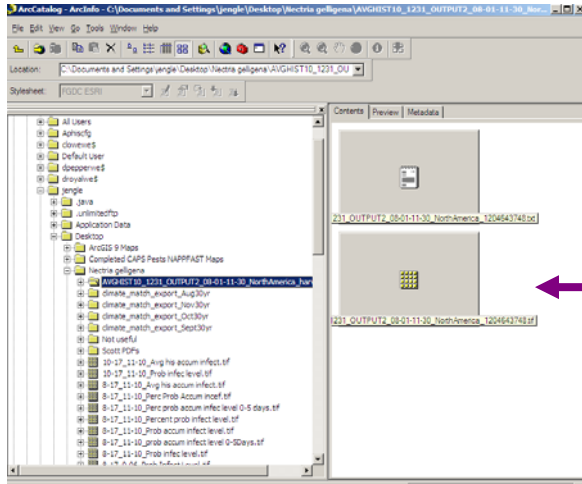


Make sure you know exactly where the extracted folder has been saved to!!

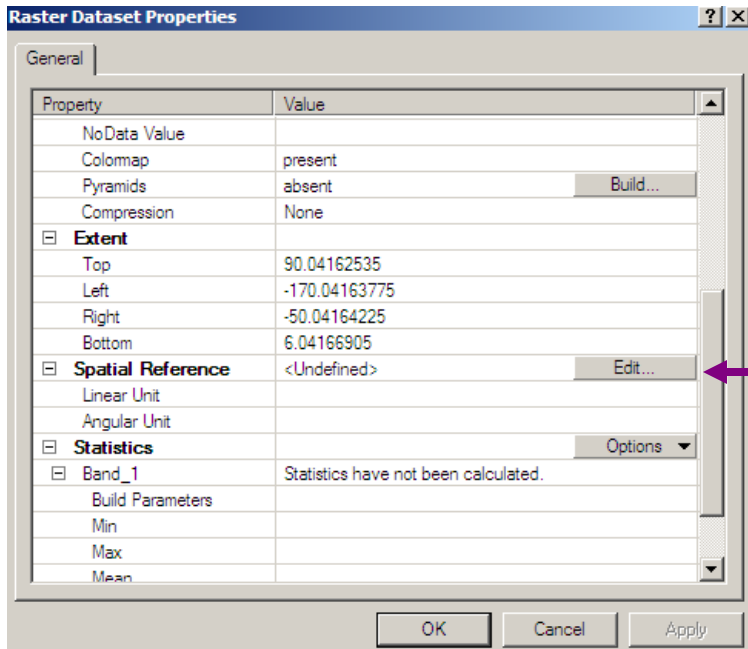


Open ARCCatalog.

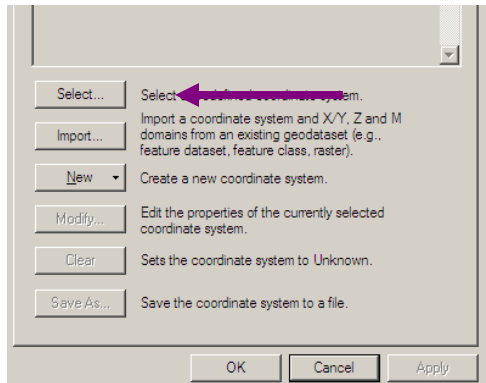




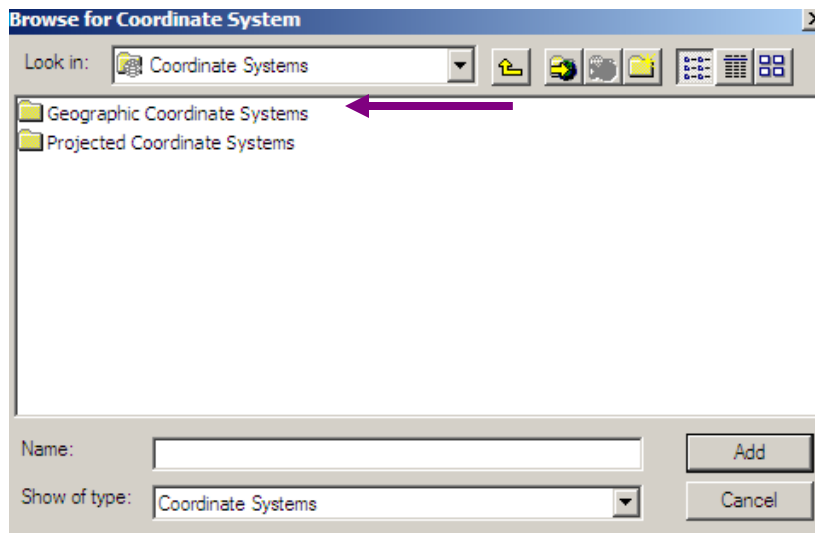
Right click on the thumbnail of the data file and select the properties.



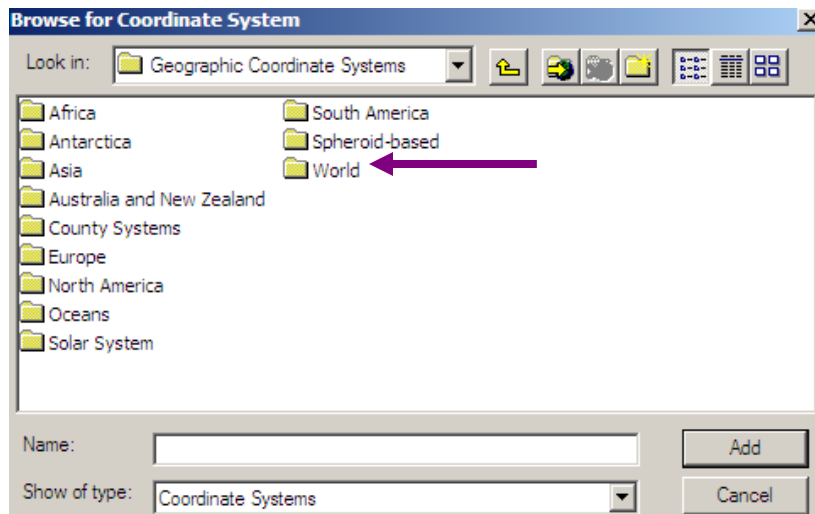
Press the 'Edit' button beside the Spatial Reference section.



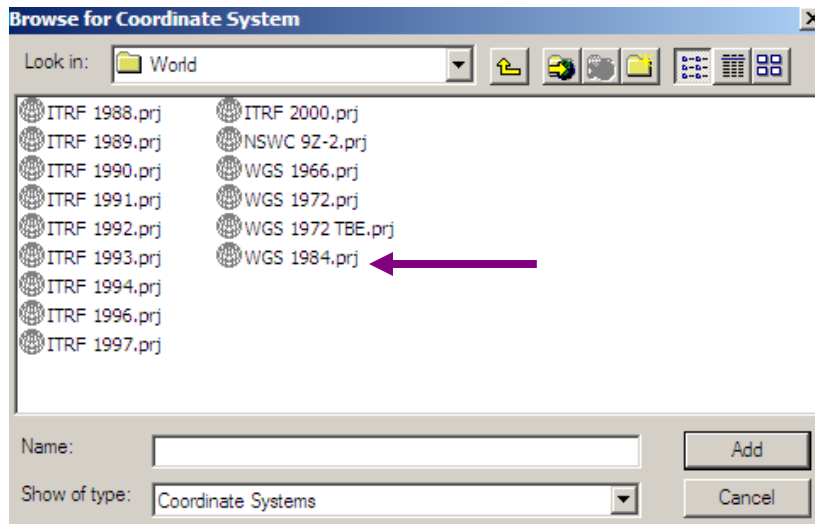
Press the 'Select' button.



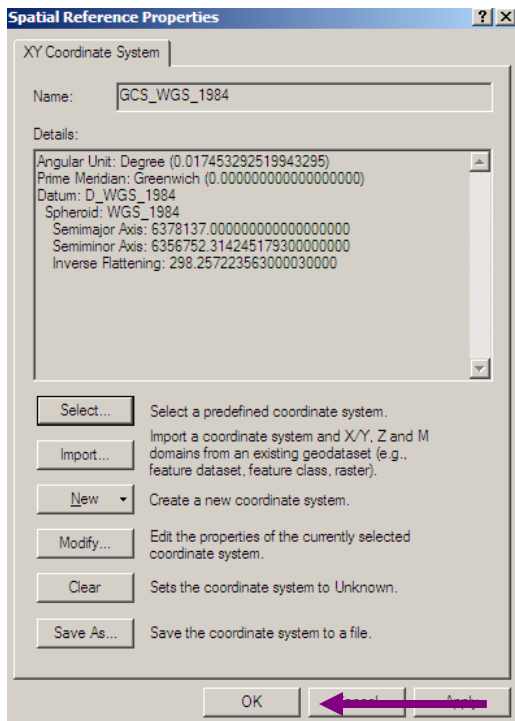
Select the 'Geographic Coordinate Systems' Folder.



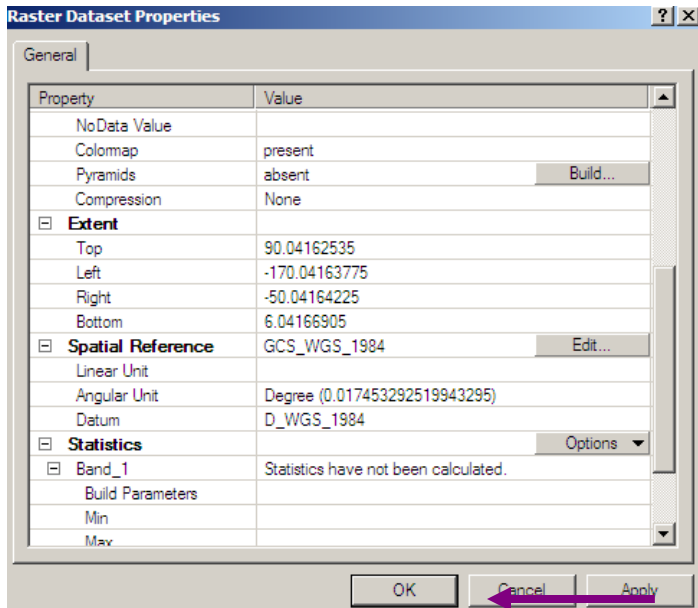
Select the 'World' folder.



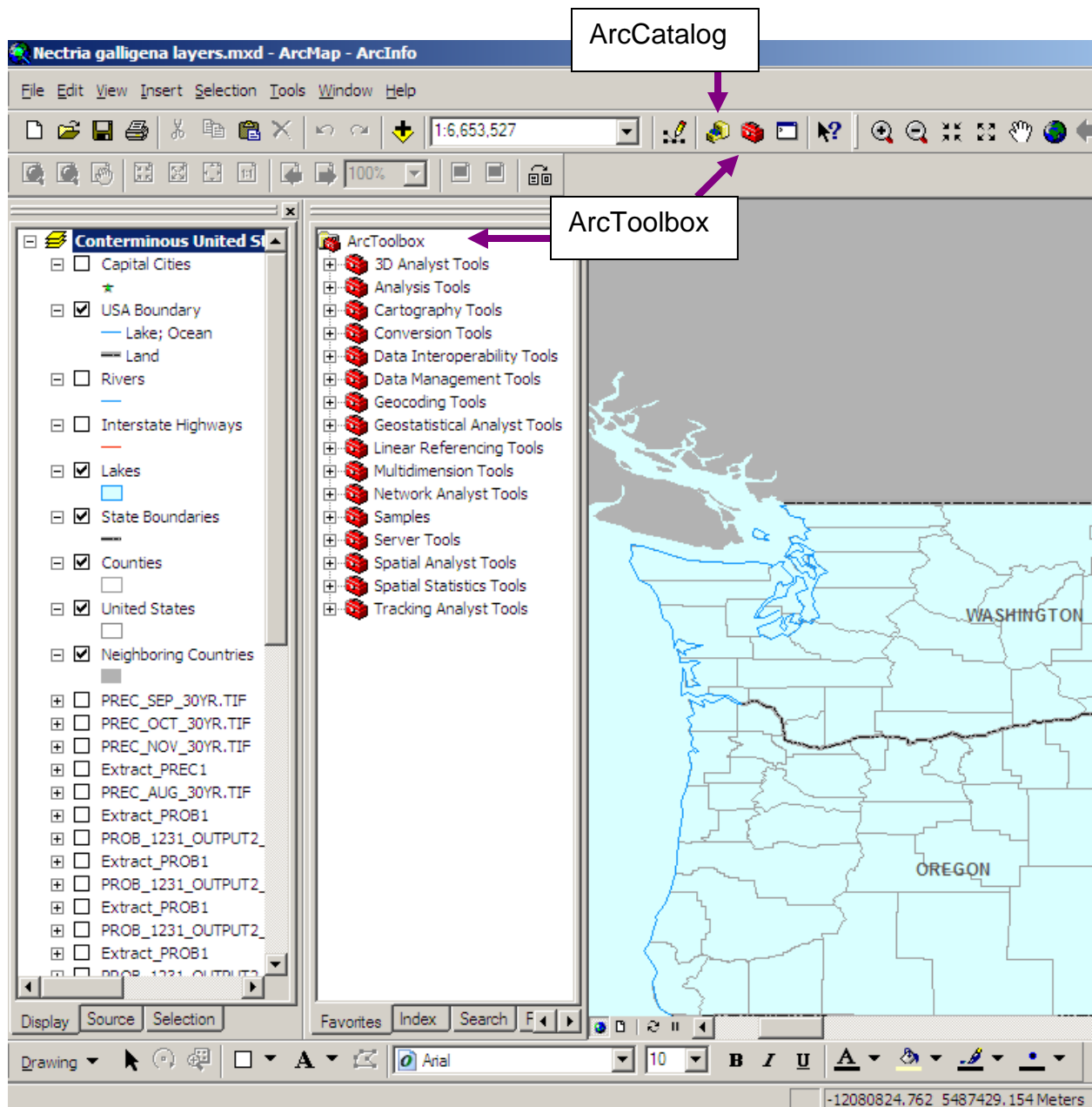
Select 'WGS 1984.prj'.



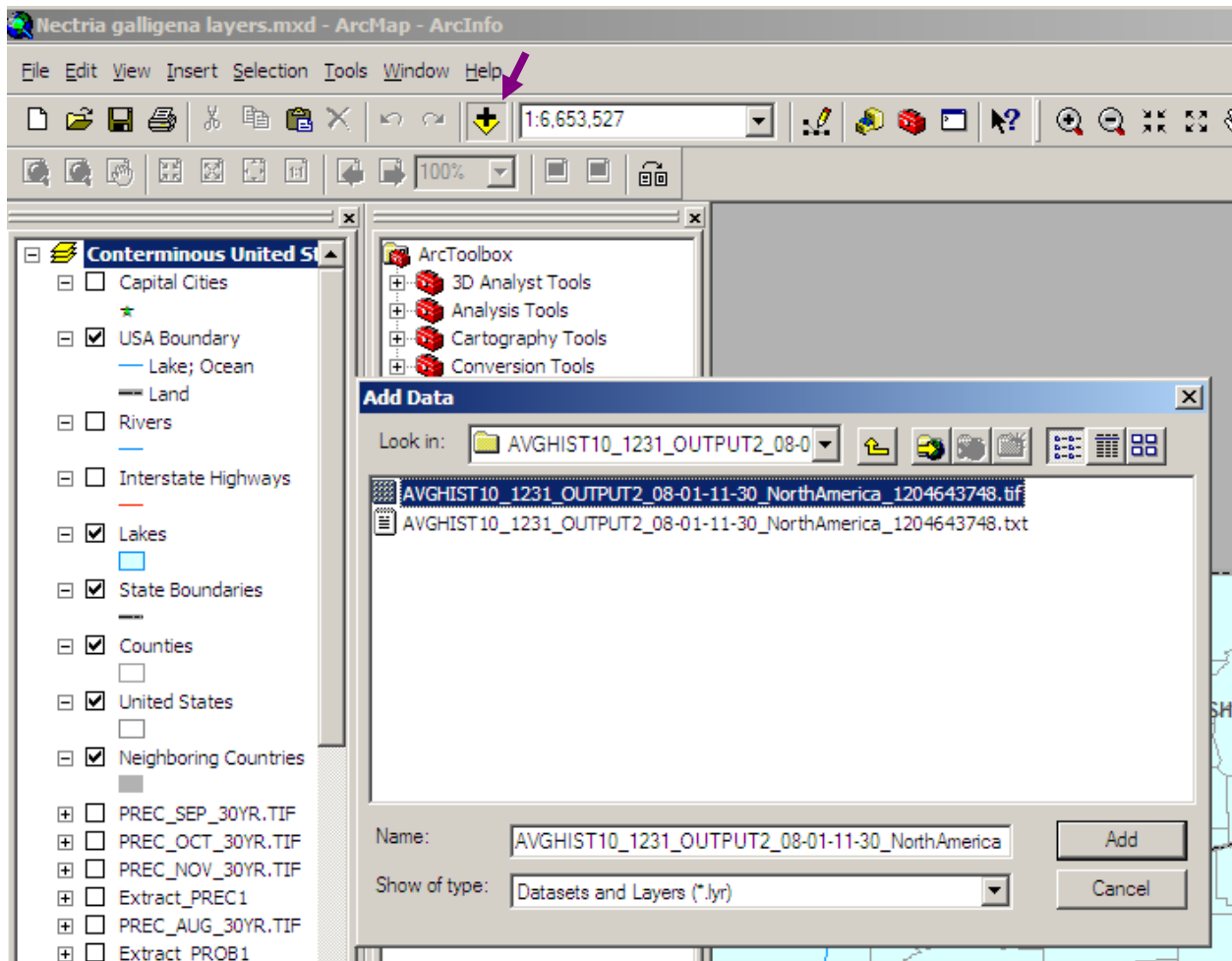
Details of the coordinate system should now be showing. Hit the 'OK' button.



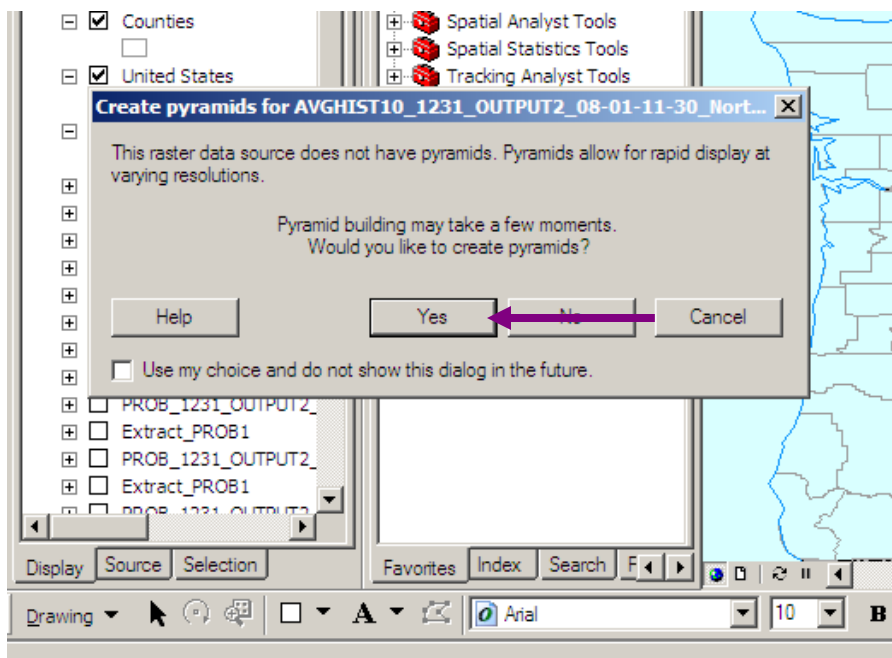
Details of the coordinate system should now be showing. Hit the 'OK' button.



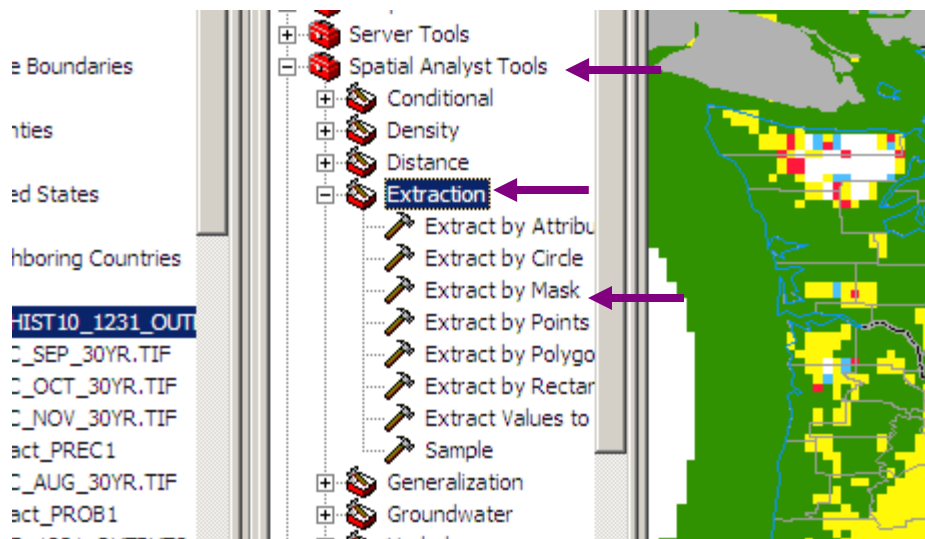
Open ArcMap. There is a shortcut in ArcMap to ArcCatalog if one needs it. Open the ArcToolbox.



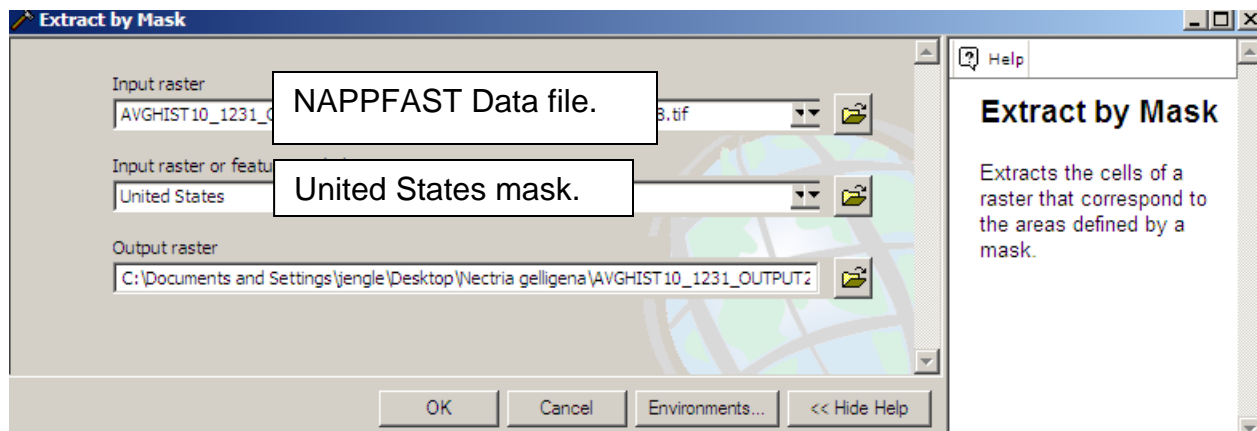
Add in the data from NAPPFAST.



Just click yes.



To line up coloring of the map from the NAPPFAST data, you will have to extract the masks. Under 'Spatial Analyst Tools', open 'Extraction' and then 'Extract by Mask'.



Select the NAPPFAST data, the United States mask and hit OK.

This will make a new layer (with new colors for each category) inside of the map of the US. Proceed as usual with ArcMap manipulations.